

# Instructional Chess at St. Mary's School

**Championship Chess** presents a systematic, fun way to build chess skills during chess instruction and while students play. Studies show that chess improves math, reading and problem-solving and our methods connect these academic benefits to our classes. Classes include instruction as well as chess play and guided analysis. *Students will be able to accomplish Achievement Cards online outside of the classroom.*

- ❖ **Day and Time:** Friday after school from **3:00 pm to 4:00 pm**
- ❖ **Dates:** Spring session starts **January 26<sup>th</sup>**, ending **March 23<sup>rd</sup>** (9 classes, 12:30 start on 03-02-18)
- ❖ **Who can play:** Session is open to all students, both beginners and experienced, in 1<sup>st</sup> grade through 5<sup>th</sup> grade, or to those younger who know how to play. **Note:** For the class to meet, we need at least 10 players **registered by email or phone, no later than January 21<sup>st</sup>**
- ❖ **Cost:** Spring Session **\$127.00** including achievement cards, or **\$117.00** if paid by January 21<sup>st</sup>
- ❖ **Registration/Payment:** Please clip and send in the registration form below with your check payable to: **Championship Chess of Greater Richmond** and mail to 13406 Mitford Drive, Midlothian, VA 23114 or pay online at [www.championshipchessRVA.net](http://www.championshipchessRVA.net) under the Register tab via Credit Card. We will confirm your payment and registration by email.

## Championship Chess Staff and Methods

Championship Chess Instructors utilize a complete curriculum introducing chess skills to beginners incrementally and improving players' skills and strategies in the opening, middle and endgame.

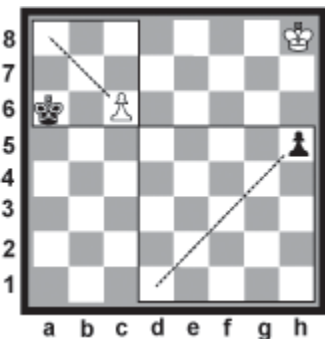
*Chess Openings:  
Two Knights Defense*



*Chess Tactics:  
White to Set a Pin*



*Endgame Strategies:  
Can White Draw?*



## UPCOMING CHESS EVENTS:

- **Upcoming Scholastic Tournaments:**
  - <http://championshipchessrva.net/tournaments/> and <http://www.vschess.org/>
- **Contact Information:** Brian Garbera, 804-921-2410; [CoachBrian@ChampionshipChessRVA.net](mailto:CoachBrian@ChampionshipChessRVA.net)

## Chess Enrollment for Spring 2018 at St. Mary's School

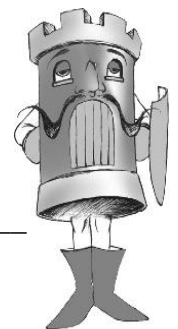
Child's Name: \_\_\_\_\_ Gr: \_\_\_\_\_ Teacher: \_\_\_\_\_

Parent/Guardian Name: \_\_\_\_\_

Home Phone: \_\_\_\_\_ Cell #: \_\_\_\_\_ e-mail: \_\_\_\_\_

\_\_\_\_\_ \$127.00 for all 9 classes if paid after January 21<sup>st</sup>, or

\_\_\_\_\_ \$117.00 if paid by January 21<sup>st</sup>



Pay by **check** to **Championship Chess of Greater Richmond**. Write "St. Mary's" at the bottom of the check and MAIL to: 13406 Mitford Drive, Midlothian, VA 23114, Attn: Brian Garbera or pay online at [www.championshipchessRVA.net](http://www.championshipchessRVA.net) under the Register tab.